

# Shasimi

# 刺身



**Tokujo Sashimi** Rp 458,000  
**Moriawase**  
 Assorted Deluxe Sashimi  
 特上刺身盛合せ  
 Salmon  
 Snapper  
 Maguro  
 Kani  
 Hamachi  
 Tako  
 Tamago



**Jyo Sashimi** Rp 198,000  
**Moriawase**  
 Assorted Sashimi  
 上刺身盛合せ  
 Salmon  
 Snapper  
 Maguro  
 Kani  
 Tako  
 Tamago



**Sansyu Sashimi** Rp 98,000  
**Moriawase**  
 Three kinds of Sashimi  
 種盛合せ  
 Salmon  
 Maguro  
 Kani



**Maguro** Rp 108,000  
 Tuna  
 鮪

Signature Dish

Government Tax and Service Charge to be added

# Shasimi

# 刺身



**Kani Kamaboko** Rp 78,000  
 Crab Stick  
 カニ蒲鉾



**Atsuyaki Tamago** Rp 68,000  
 Egg Roll  
 厚焼き卵



**Ebi** Rp 238,000  
 Prawn  
 エビ



**Tako** Rp 188,000  
 Octopus  
 タコ



**Shake** Rp 158,000  
 Salmon  
 鮭

Rotted in Nature  
 Signature Dish

Government Tax and Service Charge to be added

# Shasimi

# 刺身



**Salmon Truffle** Rp 128,000  
 サーモントリフルボン酢 掛け  
 Thin Salmon Truffle Ponzu



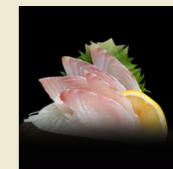
**Hamachi** Rp 408,000  
 ハマチ  
 Yellow Tail



**Hokkigai** Rp 298,000  
 北寄貝  
 Hokkaido Surf Clam



**Hotategai** Rp 188,000  
 帆立貝  
 Hokkaido Scallop



**Shiromi** Rp 138,000  
 鯛  
 Snapper

Rotted in Nature  
 Signature Dish

Government Tax and Service Charge to be added