



SHANGRI-LA
PARIS

YOUR TAILOR-MADE EVENT AT SHANGRI-LA PARIS

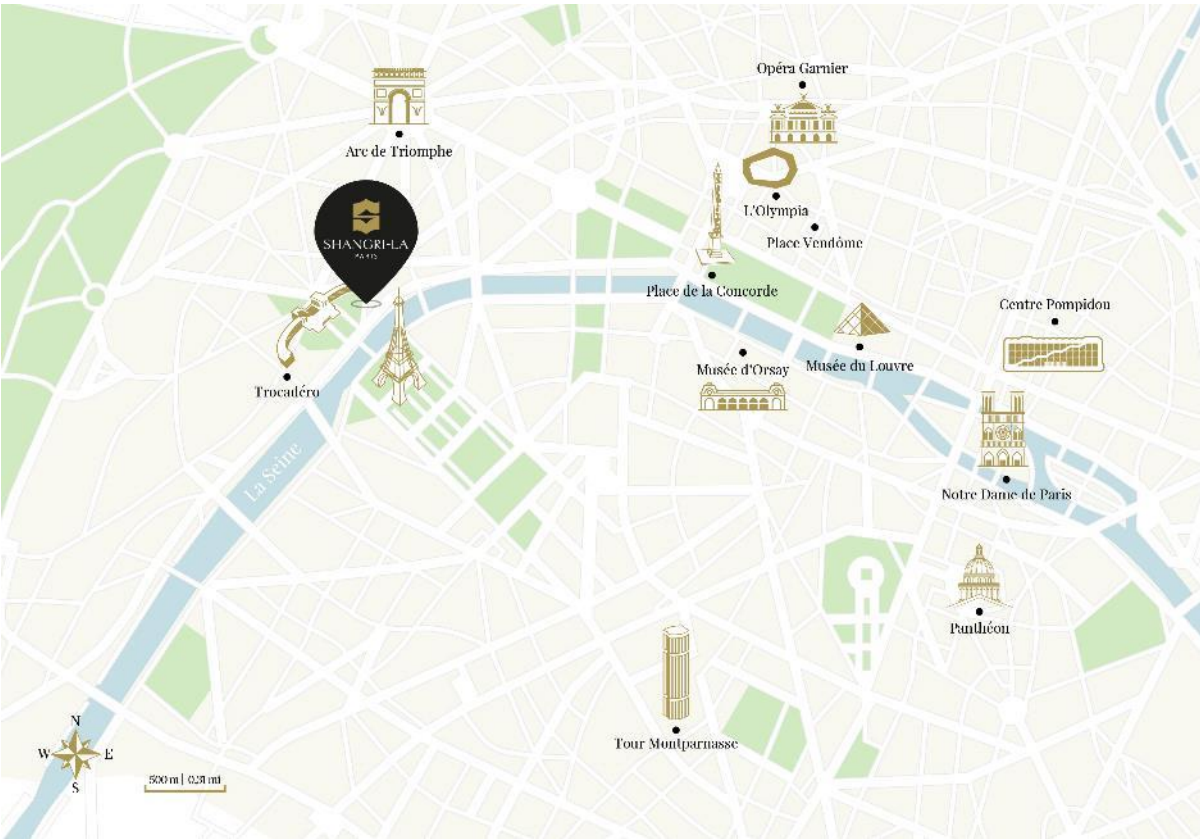


FROM PRINCE ROLAND BONAPARTE TO SHANGRI-LA PARIS

Originally built in 1896 as the home of French imperial Prince Roland Bonaparte, the most historic areas of the former Palais were listed in 200 as listed historical monuments, an initiative undertaken by the Shangri-La group.

Today, the iconic building once again welcomes Parisians and world travelers within its walls, 114 years after the Prince first opened the doors of his residential palace to Parisian society.

A LUXURY REFINED SETTING IN THE HEART OF THE CITY OF LIGHT



Shangri-La Paris is located in a 19th-century residence in the elegant 16th district of Paris, one of the most revered neighborhoods in the city.

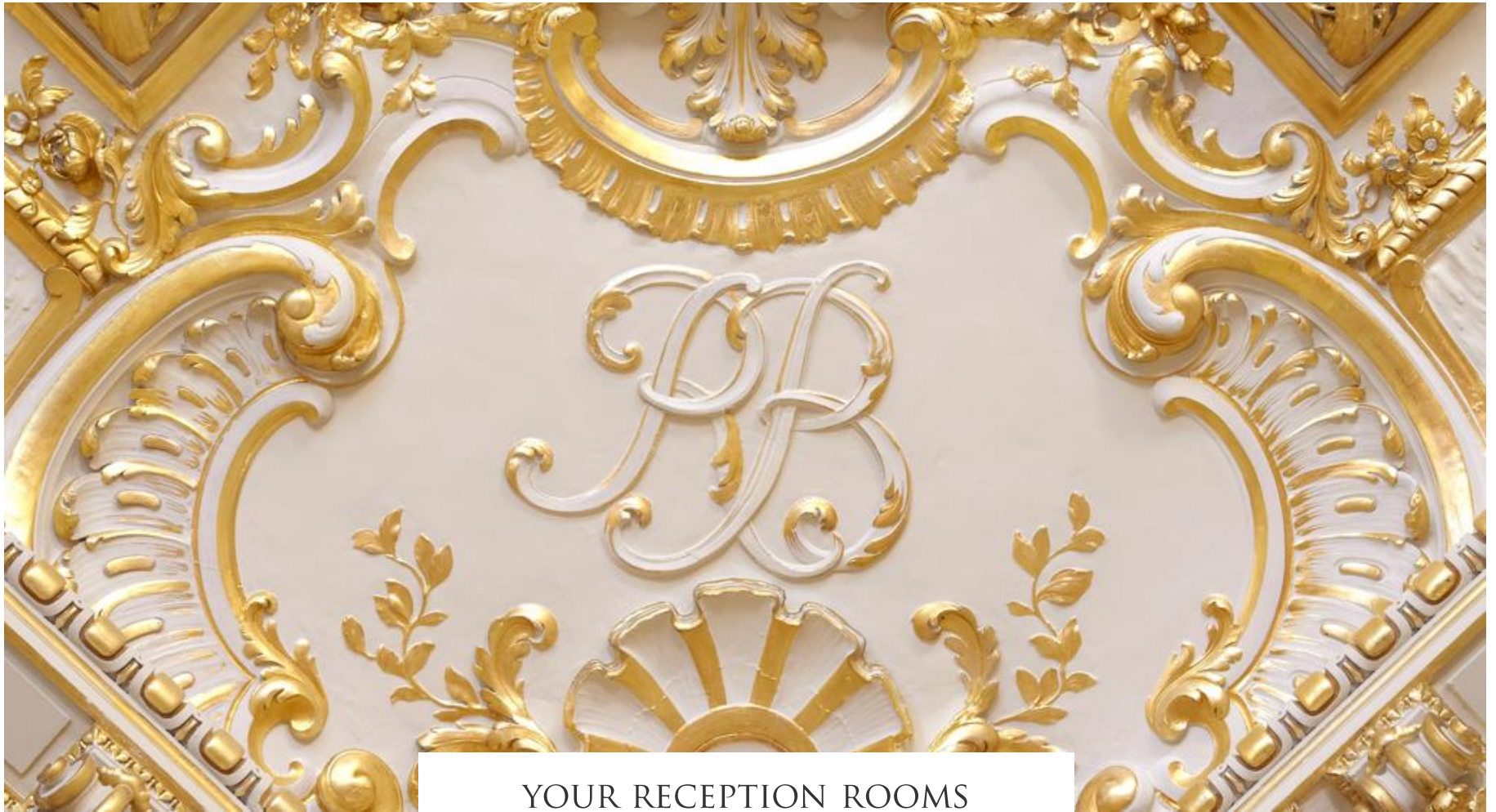
The hotel is 45 minutes from Charles de Gaulle Airport and 30 minutes from Paris Orly Airport. The six major city train stations are within easy reach and the Iena Metro station is located within a few minutes' walk.

AIRPORT TRANSFERS

Our guests can choose between hotel limousine pick-up, taxi or the metro. Taxi and limousine services can be easily spotted at the airport.

Upon supplement we are delighted to propose a fast Track airport service with our attendant to assist you with your disembarkation process.





YOUR RECEPTION ROOMS



THE SALON DE FAMILLE, THE GRAND SALON & THE SALLE À MANGER

Located on the first floor, our three historic rooms are interconnected and accessible via the Gallery and the Rotunda. The total area of this space is 790 m².

The **Grand Salon**, in Louis XIV style and overlooking Avenue d'Iéna, features an immense white marble fireplace adorned with gilded bronze and topped with a mirrored trumeau.

The two gilded wooden consoles covered in marble and the crystal chandeliers are original. Its architecture boasts numerous details, including crowns and bees.

It is unquestionably the heart of receptions, both for the Bonapartes and at the Shangri-La Paris.

The **Salon de Famille** with a view over Avenue d'Iéna, is largely inspired by the Empire style, imbued with freshness and lightness.

The paneling is painted with winged women surrounding a medallion.

The fresco is reminiscent of the one given to Malmaison, hence its reproduction during the renovation.

The stunning ceiling features a circle blending sphinxes and foliage.

The **Salle à Manger**, overlooking Avenue d'Iéna and entirely dedicated to the glory of the Emperor, features wooden mahogany trophies of arms and military trophies sculpted into the upper arches of the doors and the window opening onto a vast terrace.

Two large eagles with outstretched wings, accompanied by fasces and laurel leaves, also adorn the four arches.

THE ROTUNDA & THE GALLERY



THE GRAND SALON

Area: 120 m²/1291 ft², located at the 1st floor

Dimensions: 7,75 m x 15,3 m

Communicating with a gallery of 80 m²

CAPACITY

Click on the photo to watch the video of your salon

120



Round table

150



Cocktail

48



Oval table

130



Theater

90



Classroom

52



U-Shape





THE SALON DE FAMILLE

Area: 94 m²/1011 ft², located at the 1st floor

Dimensions: 6,8 m x 13,7 m

Ceiling height: 6.85 m

CAPACITY

Click on the photo to watch the video of your salon

48



Round table

80



Cocktail

22



Oval table

40



Theater

24



Classroom

20



U-Shape

THE SALLE À MANGER

Area: 99 m²/1065 ft², located at the 1st floor

Dimensions: 7 m x 14,3 m

Ceiling height: 6.85 m

CAPACITY

Click on the photo to watch the video of your salon

96



100



Cocktail

32



Oval table

90



Theater

56



Classroom

40



U-Shape





THE EIFFEL TERRACE

Located on the first floor of the hotel, our Historic Reception Rooms provide access to our sumptuous Eiffel Terrace.

This unique terrace offers a breathtaking view of the Eiffel Tower.

This gem is a shared space that can be reserved to host your events when the Historic Rooms are fully privatized.

THE SALON ROLAND BONAPARTE

Area: 210 m²/2260 ft², located on level 2F in daylight

Dimensions: 15 m x 14 m

Soundproof room with sound system

Technical capacity: 2 projectors, 2 screens and 2 cameras

CAPACITY

Click on the photo to watch the video of your salon

204



Round table

310



Cocktail

38



Oval table

270



Theater

147



Classroom

54



U-Shape





THE SALON MARIE BONAPARTE

A tribute to Prince Roland Bonaparte's daughter, the Salon Marie Bonaparte offers a unique setting with an elegant, contemporary decor, providing guests with a cosy ambience.

A luminous, spacious setting overlooking the Palace's green bubble: the garden.

A truly special moment for any occasion.

Area: 120 m²/1292 ft², located on the ground floor

View of the Palace garden

Ceiling height: 2.98 m

CAPACITY

28



Round table

46



Individual
tables

26



Oval table

HISTORICAL BALLROOMS

	AREA FT²	CEILING HEIGHT METERS	MAXIMUM CAPACITY						
			THEATRE	ROUND TABLES	COCKTAIL	CLASSROOM	U-SHAPE	OVAL TABLE	CABARET

GROUND FLOOR

SALON MARIE BONAPARTE	1291	2.9	24	46	.	.	.	26	25
-----------------------	------	-----	----	----	---	---	---	----	----

1ST FLOOR

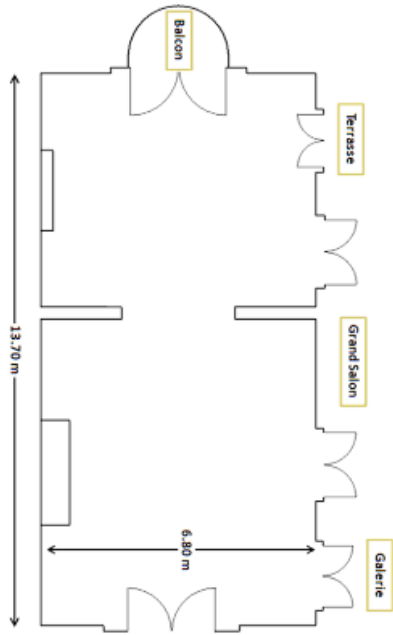
SALLE À MANGER	1065	6.8	90	96	100	56	40	32	56
GRAND SALON	1291	6.8	130	120	180	90	52	48	64
SALON DE FAMILLE	1011	6.8	40	48	80	24	20	22	32
HISTORICAL BALLROOMS TOTAL (INCL. GALLERY AND ROTUNDA)	5468	6.8	.	300	500

FLOOR FRESNEL 2F

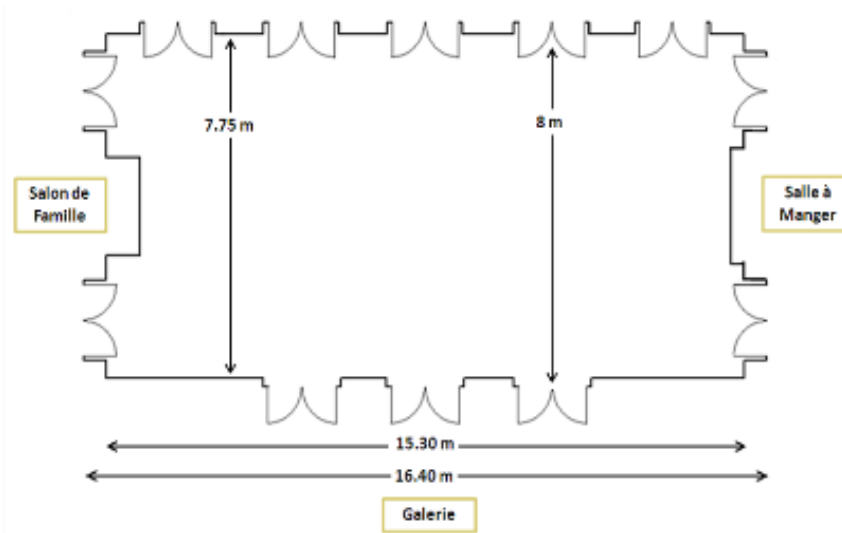
SALON ROLAND BONAPARTE	2260	4.5	270	204	310	147	54	38	144
------------------------	------	-----	-----	-----	-----	-----	----	----	-----



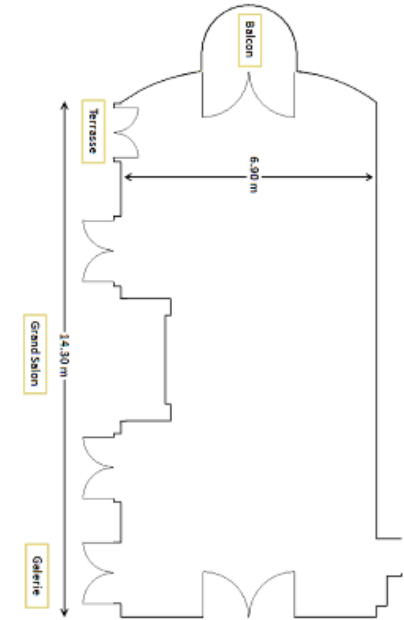
HISTORICAL RECEPTION ROOMS FLOOR PLAN



SALON DE FAMILLE



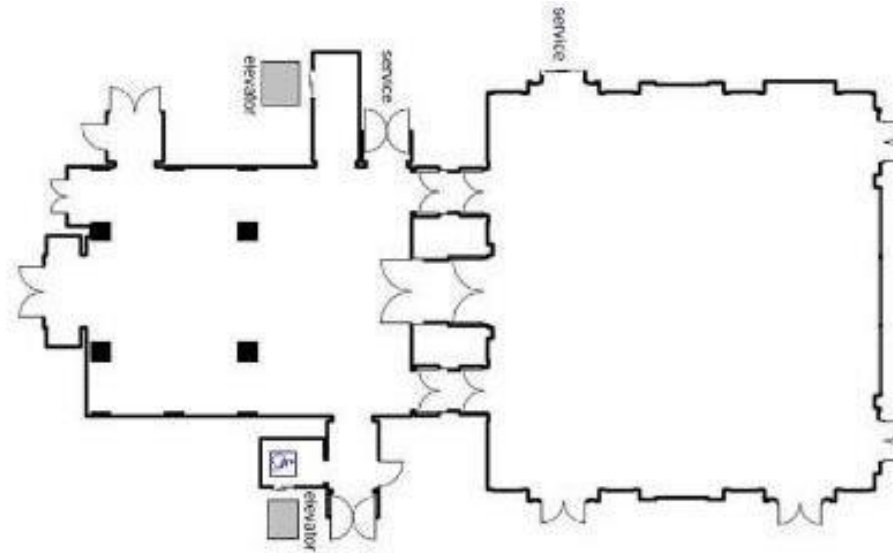
GRAND SALON



SALLE À MANGER



SALON ROLAND BONAPARTE FLOOR PLAN



FOYER
ROLAND BONAPARTE

SALON
ROLAND BONAPARTE





SUSTAINABILITY AT *Shangri-La Paris*



Eliminating Single Use Plastics

- Plastic bottles have been replaced with 100% recyclable water cartons in our guest rooms, pool and wellness areas, reducing the use of plastic bottles by 70,000 per year
- Glass bottles are provided in guest rooms
- We have eliminated all plastic bathroom amenities
- Wooden key cards have replaced 10,000 plastic key cards annually



Reducing Food Waste

- We donate unused, approved food to our local food bank in Paris
- Our cooking oil is sent to our waste partner for recycling



Cleaning the Neighbourhood

- Twice a year we collect waste in our neighbourhood for World Clean Up day
- In 2024 we collected 50kg of rubbish around the hotel



Conserving Energy

- We've switched to LED lights, and over the past 8 years we've saved 1000KWH of energy annually
- Linen and towels are replaced every second day, unless otherwise requested
- We have electric car charging terminals at the hotel entrance



Rooted In Nature

- Our seafood is sourced directly from Brittany, and we use free range eggs from France
- Almost all our fruit and vegetables are sourced locally
- We have a beehive on our roof that supplies honey for our restaurants
- In partnership with Veritree, a tree is planted in Brazil or in California for every stay spent at Shangri-La Paris. Over 6,000 trees will be planted this year.



Sourcing locally

- Our uniforms are made from recycled material and are made locally in France



10 Avenue d'Iéna – 75116 Paris

Your event team:

events.slpr@shangri-la.com / +33 (0)1 53 67 19 38