



SHANGRI-LA  
THE SHARD  
LONDON



## Heartfelt Hospitality Since 1971

The name Shangri-La originated from the pages of James Hilton's 1930s novel *Lost Horizon*, in which an idyllic paradise unlike anything seen on earth before is discovered.

Fiction became fact in 1971, when the first Shangri-La hotel opened in Singapore. This marked the beginning of a new standard for hotel excellence in Asia.



## Destination London

Feel an unparalleled connection to London at Shangri-La The Shard, London. Starting on level 34 – a soaring 125 metres high – the hotel occupies 18 floors of The Shard, an architectural icon and Western Europe's tallest building.

Guests can connect to the whole city through panoramic skyline views overlooking the River Thames, with beloved landmarks such as the Tate Modern, Shakespeare's Globe, Borough Market and St Paul's Cathedral within easy reach.



## The Rise Of An Iconic Luxury Landmark

Shangri-La The Shard, London is the capital's highest hotel, located in The Shard, one of the world's most iconic buildings, situated in the heart of London Bridge.

Set between Borough Market and Bermondsey Street, the hotel boasts a vibrant food and beverage offering from sky high cocktails in GÖNG Bar, to elegant afternoon tea in TĪNG Restaurant and Lounge, and local favourites by Bar 31.

Whether by foot, road, boat or rail, it connects to world famous landmarks such as St Paul's Cathedral and Tower Bridge, and to London's main business districts in the City and Canary Wharf.

[Discover More](#)



## 185 Sky High Rooms

- Superior Shard Room:
  - 30 - 48 sqm / 322 - 516 sqf of towering luxury.
  - Floor-to-ceiling windows boasting impressive southerly views of London.
- Premier Shard Room:
  - 47 - 58 sqm / 505 - 623 sqf of picturesque luxury.
  - Brilliant southerly views of London's skyline from floor-to-ceiling windows.
- Deluxe City View Room:
  - 32 - 47 sqm / 344 - 505 sqf of scenic luxury.
  - Mesmerising views of iconic landmarks from floor-to-ceiling windows.
- Premier City View Room:
  - 47 - 58 sqm / 505 - 623 sqf of spacious luxury.
  - Captivating northerly views of London's skyline.
- Iconic City View Room:
  - 43 - 60 sqm / 462 - 645 sqf of superb luxury.
  - 180-degree panoramic views of London's spectacular skyline.

[Virtual Tour](#)





## 17 Unique Suites

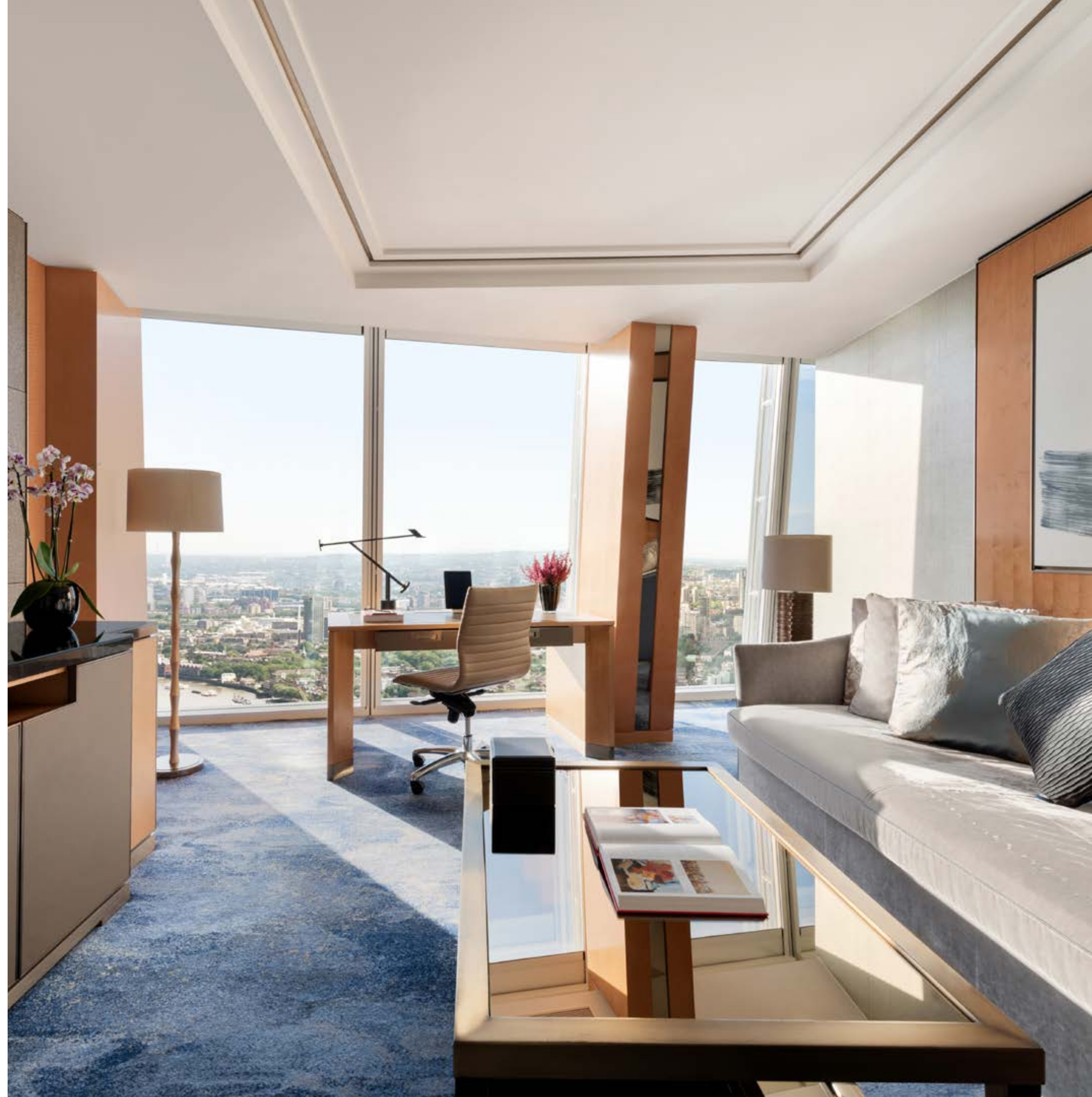
- Premier Shard Suite:

- 65 - 71 sqm / 645 - 763 sqf of exquisite luxury.
- Sensational southerly views from floor-to-ceiling windows.
- Large marble-clad bathroom with walk-in rain shower, separate bathtub, premium Washlet toilet, mirror-embedded television and heated floors.
- Separate bedroom and living room with a cosy working area.

- Iconic Shard Suite:

- 60 - 72 sqm / 645 - 935 sqf of serene luxury.
- Panoramic views of London's skyline and its most iconic landmarks.
- Separate bedroom and living room with a cosy working area.
- Large marble-clad bathroom with walk-in rain shower, freestanding bathtub, premium Washlet toilet, mirror-embedded television and heated floors.

[Virtual Tour](#)





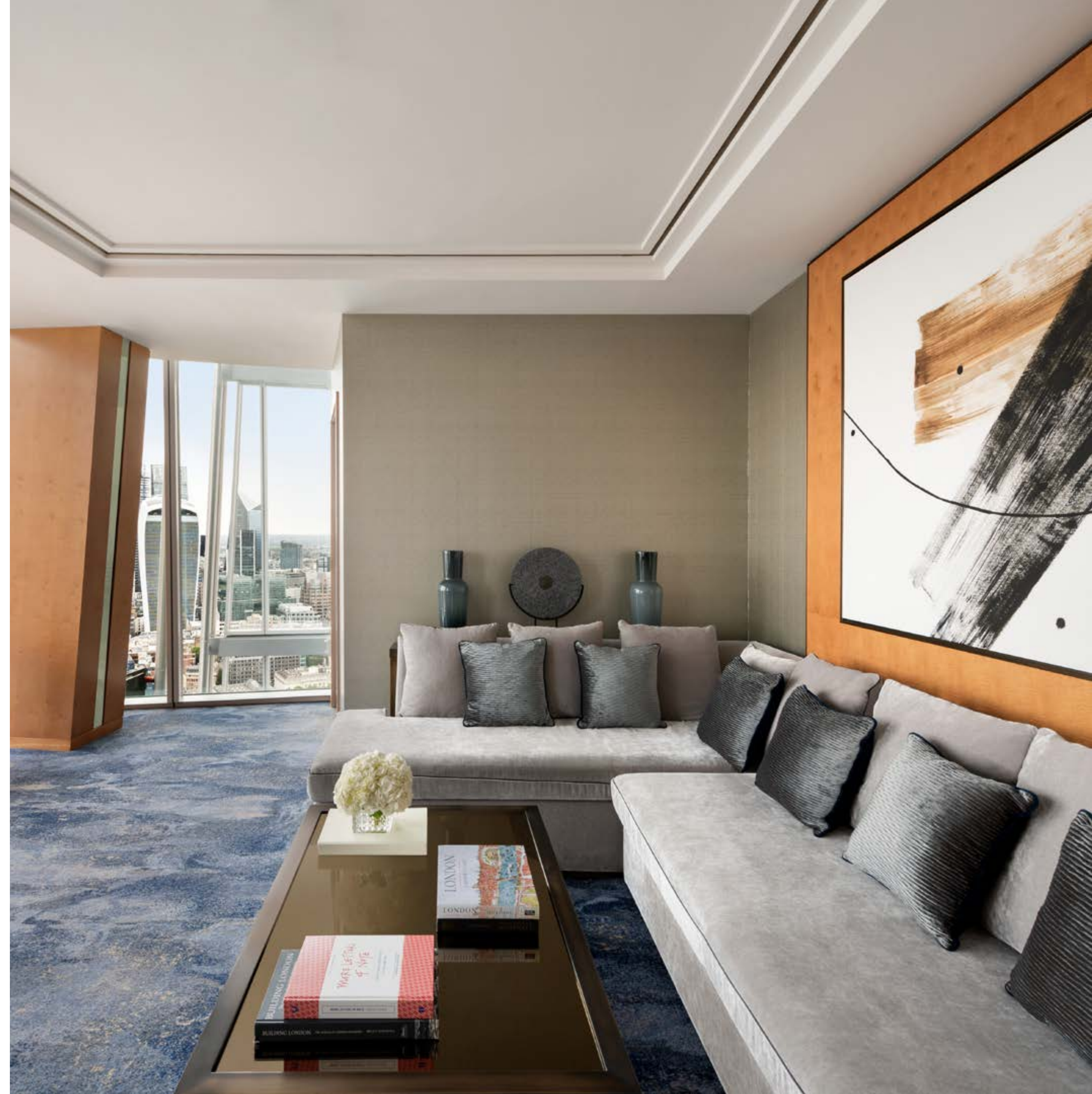


## Southwark Suite

Located on Level 36, the unique Southwark Suite gazes west upon the London skyline with views of St. Paul's Cathedral.

This spacious one-bedroom suite offers a separate living room featuring a large corner sofa and casual dining table for two, along with exclusive privileges including a 1-way private airport transfer and champagne on arrival.

[Virtual Tour](#)



## Westminster Suite

Located on Level 37, the exclusive Westminster Suite provides panoramic views of London from St. Paul's Cathedral and the Gherkin to Tower Bridge and Canary Wharf.

This spacious one-bedroom suite features a walk-in dressing room, separate living room and dining area, intimate workspace and a guest bathroom, along with exclusive privileges including a 1-way private airport transfer and a bottle of champagne on arrival.

[Virtual Tour](#)



## London Suite

Located on Level 38, the luxurious London Suite combines the elegance of Shangri-La's Asian heritage with the innovation of The Shard's architecture.

This expansive one-bedroom suite features a walk-in dressing room, separate living room and dining area, intimate workspace and a guest bathroom, along with exclusive privileges including a 1-way private airport transfer and a bottle of champagne on arrival.

[Virtual Tour](#)



## Shangri-La Suite

Occupying a vast portion of Level 39, the showstopping Shangri-La Suite is the ultimate VIP retreat.

The spacious living room with a separate dining area and kitchenette provides ample space for relaxing and entertaining, while a custom super-king Shangri-La bed draped in 1,000-thread count luxury linens sets the stage for an unbelievably relaxing stay.

For those requiring additional space, this suite can interconnect to an adjacent Premier City Room to create a two-bedroom apartment with a total living space of 232 square metres.

[Virtual Tour](#)



## Jo Loves Amenities

Shangri-La The Shard, London has collaborated with Jo Loves to offer guests an exclusive new bathroom amenity line, making it the first hotel in the world to offer a full range of The Jo by Jo Loves collection.

The new amenity line has introduced refillable bottles to the hotel, eliminating the use of more than three tonnes of plastic a year.

The bright red bottles reflect Shangri-La's Asian heritage and are made from recyclable OceanBound Material, collected from waterways and removing plastic from the oceans.



## Family Getaway In The Clouds

Guests travelling as a family can enjoy exclusive offers along with sweet treats and a buffet breakfast with the Shangri-La Family Stay package.

Little ones will love cuddling up to a “Romeo” - the fox soft toy, and reading about his real life adventures up The Shard.

[Discover More](#)





## TĪNG Restaurant

TĪNG Restaurant offers a dynamic sky-high dining experience, including afternoon tea as well as signature and modern dishes inspired by Asian cultures.

Passionate chefs curate fine dining dishes with attention to detail, using local and seasonal ingredients, complemented by the Shangri-La brand's informal, warm, and genuine service style to deliver true hospitality from the heart.

TĪNG is located on the 35th floor of the world-renowned Shard and is the building's highest dining experience, offering unparalleled views across London.

[Discover More](#)





## GÖNG Bar

Experience the highest hotel bar in Western Europe, bringing unparalleled elegance to the city's social scene.

Elevated on Level 52, GÖNG is the perfect place for sunset cocktails and late-night drinks, featuring the dramatic backdrop of London's skyline.

Guests can now experience GÖNG's brand-new Hues of Culture menu, featuring 10 carefully-curated cocktails, each representing an artistic expression and evoking a journey inspired by colour psychology and history.

[Discover More](#)



## Sky Lounge

Sky Lounge is located in Shangri-La The Shard, London on level 34. The elegant lounge offers a relaxed setting to unwind and socialise in style while taking in breathtaking views of London.

Sky Lounge boasts a delectable menu of light bites, a luxury Sunday Brunch experience and an impressive selection of drinks including signature Veuve Clicquot cocktails to help toast to any occasion.

[Discover More](#)



## Bar 31

Bar 31 is a wonderful meeting place to unwind over a few drinks in the heart of London Bridge.

Greeted by an energetic and friendly team, the bar offers local craft beers on tap, along with a fantastic range of spirits and wines.

Tasty bites are sourced using fresh seasonal ingredients from Borough Market.

[Discover More](#)



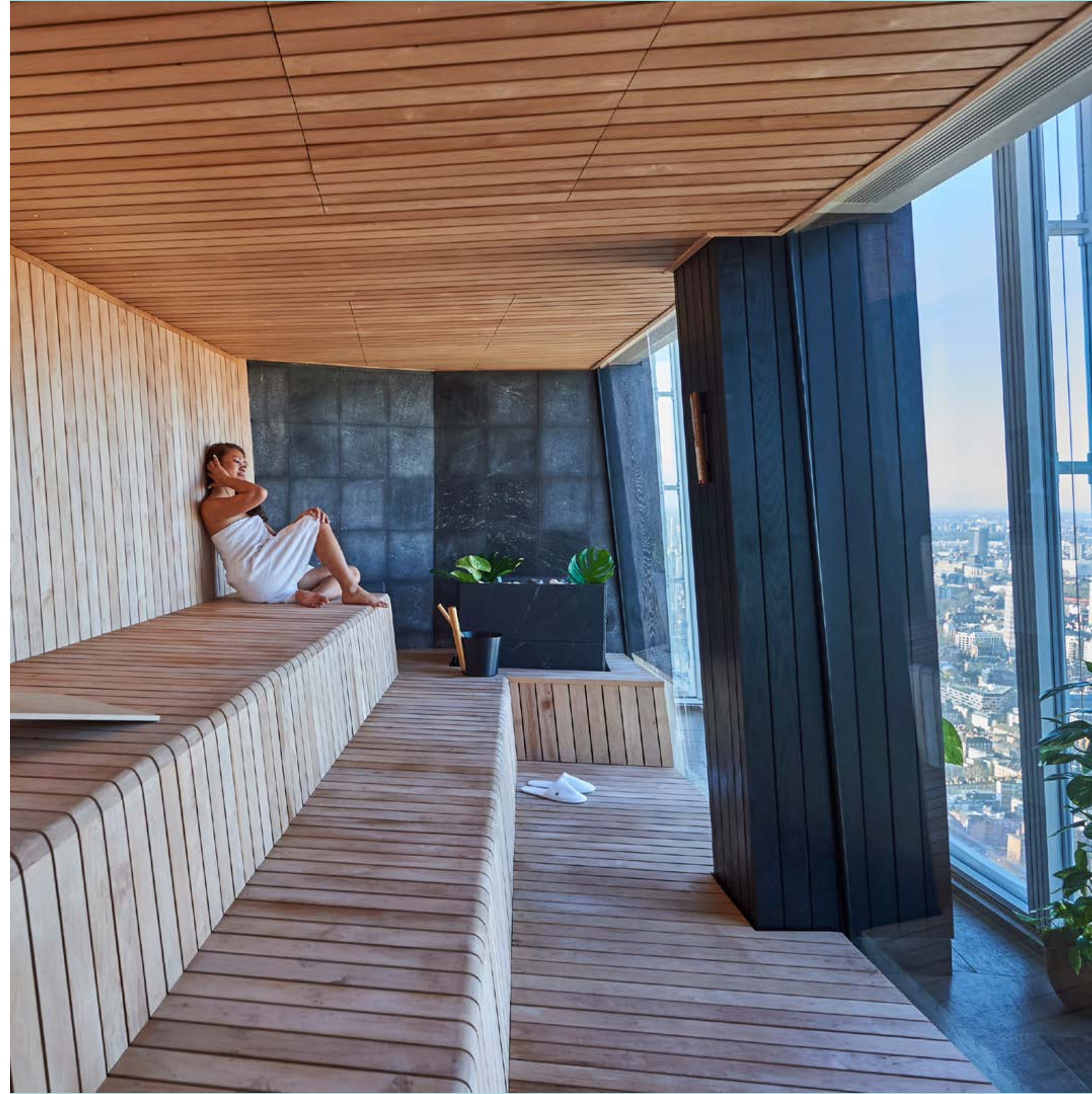
## Wellness & Sky Pool

Escape from the city to the clouds with a wellness staycation.

Floating 52 stories above London, the infinity Sky Pool is the highest hotel pool in Western Europe and sits alongside the Sky Sauna and fully-equipped gym to offer guests a wellness oasis with unparalleled views.

For even more relaxing moments, guests can enjoy a luxurious selection of spa treatments in partnership with Neal's Yard Remedies in the privacy of their room or suite.

[Virtual Tour](#)





## Meet & Celebrate

Enhance your special occasion with the most dramatic views of any London event space.

Shangri-La The Shard, London offers the city's most high-profile destination for meetings, weddings and social events.

The event spaces are perched 125 metres above the city on the 34th floor and offer spectacular views of London's skyline, overlooking the city's most famous landmarks, including Tower Bridge, St Paul's Cathedral and the London Eye, making for a perfect backdrop to your unique event or special occasion.

[Discover More](#)

[Virtual Tour](#)



## Your Wedding In The Sky

Shangri-La The Shard, London, turns dream weddings into a reality.

Discover a world where elegance meets sophistication, where impeccable service and breathtaking venues unite to create memories worth a lifetime.

From intimate civil ceremonies to receptions for up to 100 guests, celebrate your special day in the clouds with an enchanting backdrop of London.

[Discover More](#)



## Shangri-La Circle

Explore a host of elevated experiences with the Shangri-La Circle loyalty programme – curated by Shangri-La completed by you, with more flexibility, simplicity, recognition, convenience, and most importantly, more privileges designed to suit your needs.

- Member Exclusive Offers
- Earn Free Nights
- Enjoy exclusive use of Mobile Check-in and Check-out when using our app
- Children Eat for Free
- Earn Points on Multiple Rooms
- Priority Waitlist Reservations
- Family Membership

[Join Shangri-La Circle](#)

