



## FACTS AND INFORMATION

SHANGRI-LA HOTEL, JAKARTA

### LOCATION

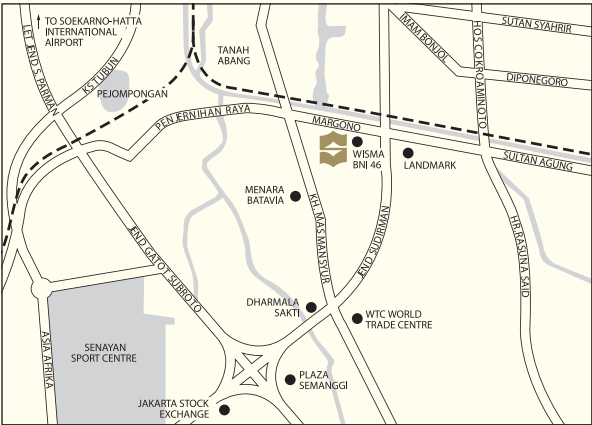
Strategically located in the centre of Jakarta’s Sudirman business district, the hotel is a luxurious oasis that offers easy access to the city’s very best, with Soekarno-Hatta International Airport only 27 kilometres away.

### ACCOMMODATION

The hotel comprises 662 guestrooms, including 40 suites, 118 Horizon Club rooms, and 504 Deluxe rooms. Non-smoking floors and disabled-friendly rooms are available upon request.

### GUESTROOMS

Categories	Rooms	Area (m²)
Deluxe Room	504	43
Horizon Club Room	118	45
Executive Suite	9	65
One-Bedroom Suite	24	88
Two Bay Suite	4	107
Three Bay Suite	1	150
Presidential Suite	2	370



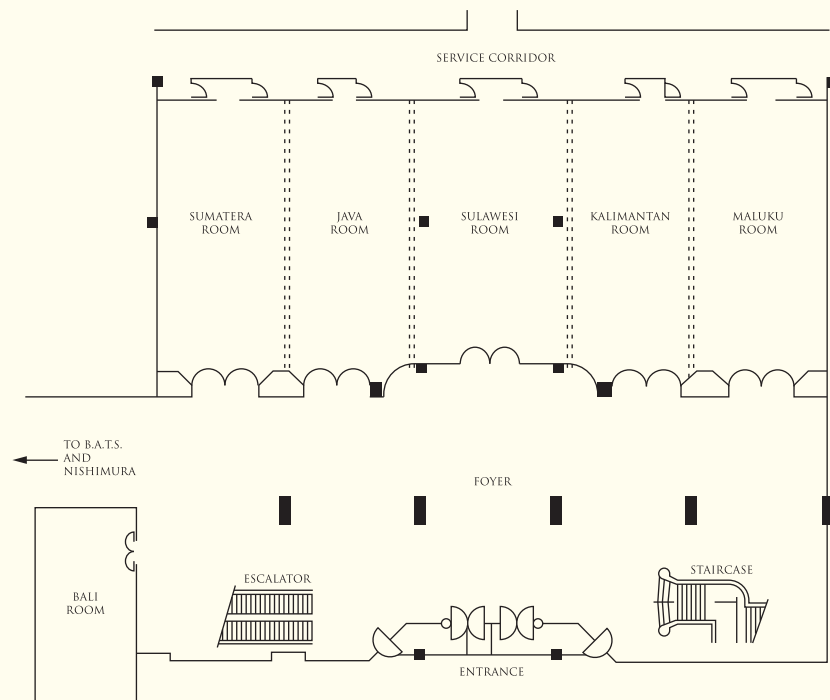
### GUESTROOM FEATURES

- 24-hour in-room dining
- Cable TV
- Complimentary fixed line and Wi-Fi connection with High Speed Internet Access (HSIA)
- IDD telephone
- Coffee and tea-making facilities
- Fully-stocked mini-bar and fridge
- Hairdryer, bathrobe and slippers
- Electronic safe
- Safe deposit box

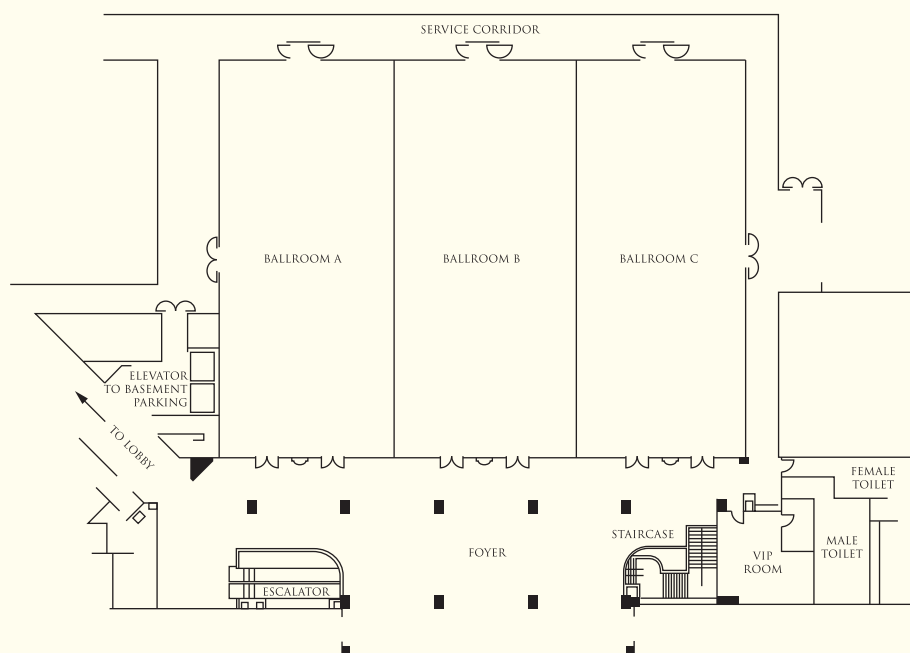
## BANQUET AND CONFERENCE ROOMS

Venue	Capacity					Dimensions (m)	Area (m <sup>2</sup> )	Ceiling Height (m)
	Reception	Theatre	Banquet	Classroom	Boardroom			
Grand Ballroom	3,000	2,400	1,000	1,000	•	51 x 35	1,785	6.00
Ballroom A	600	400	320	300	•	17 x 35	595	6.00
Ballroom B	600	400	320	300	•	17 x 35	595	6.00
Ballroom C	600	400	320	300	•	17 x 35	595	6.00
Pre-Function Foyer	750	•	•	•	•	•	709	3.00
Indonesia Room	750	600	300	350	•	40 x 17	680	3.50
Sumatera	150	100	60	60	35	8 x 17	136	3.50
Jawa	150	100	60	60	35	8 x 17	136	3.50
Sulawesi	150	100	60	60	35	8 x 17	136	3.50
Kalimantan	150	100	60	60	35	8 x 17	136	3.50
Maluku	150	100	60	60	35	8 x 17	136	3.50
Pre-Function Foyer	750	•	•	•	•	•	594	3.00
Ceria Room	500	200	200	100	•	22 x 24	528	3.00
Poolside Garden	750	650	400	380	•	20 x 36	720	•
Poolside Garden Pre-Function	200	•	•	•	•	20 x 20	400	•
Lotus Ballroom	200	150	100	80	•	12 x 22	264	4.00
SATOO Garden	200	192	100	120	•	20 x 11	220	4.00
Meeting Room								
Bandung	60	50	40	30	24	9 x 8	72	2.50
Yogyakarta	60	50	40	30	24	9 x 8	72	2.50
Denpasar	60	50	40	30	24	9 x 8	72	2.50
Medan	60	50	40	30	24	9 x 8	72	2.50
Padang	60	50	40	30	24	9 x 8	72	2.50
Surabaya	60	50	40	30	24	9 x 8	72	2.50
Boardroom 1	•	•	•	•	22	16 x 9	144	2.50
Boardroom 2	•	•	•	•	14	10 x 8	80	2.25

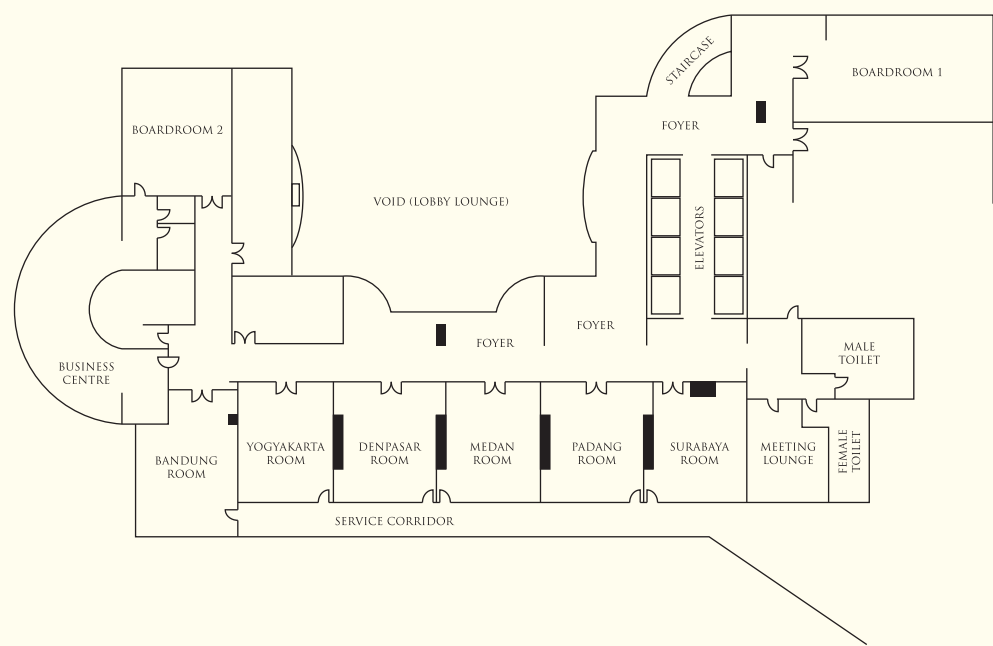
## LEVEL 1 INDONESIA ROOM



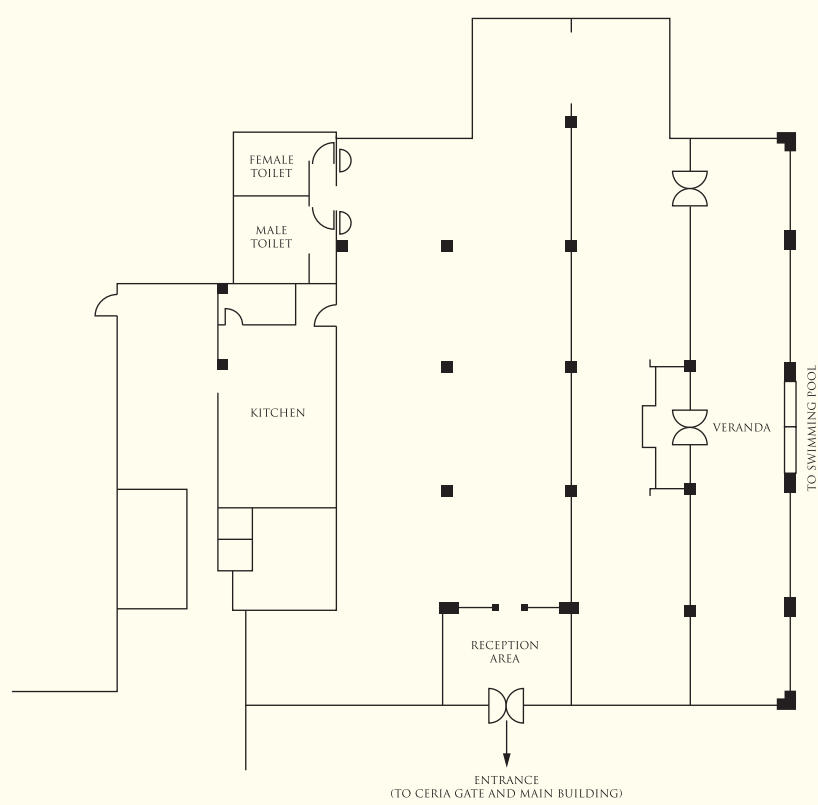
## LEVEL 2 GRAND BALLROOM



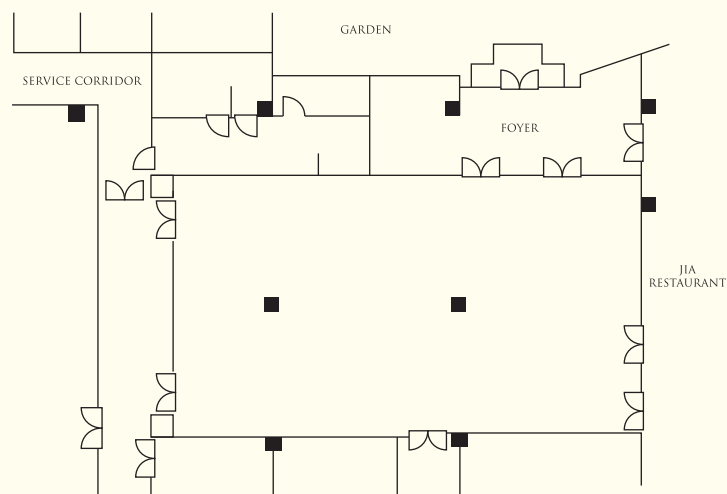
LEVEL 3 MEETING ROOMS



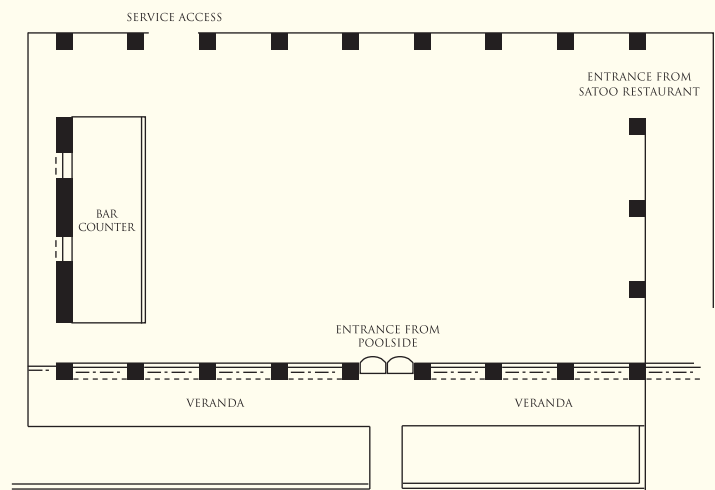
CERIA ROOM



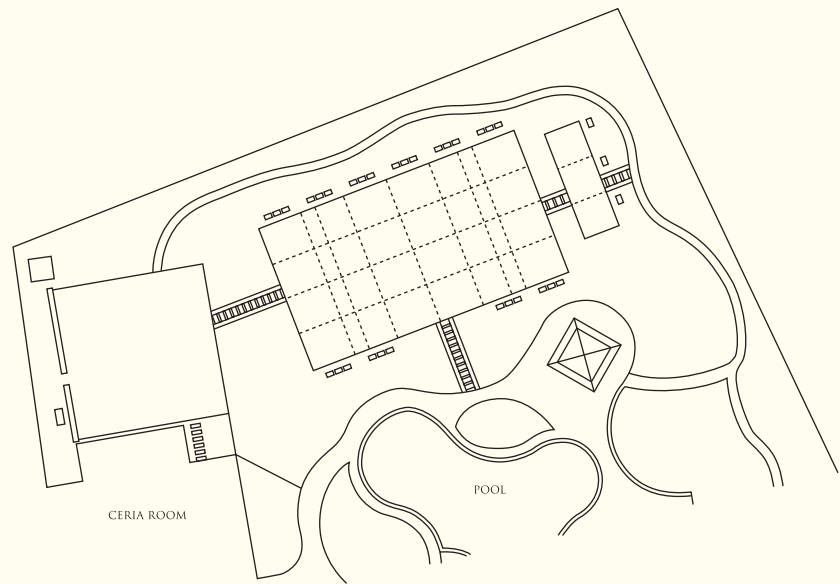
LOTUS BALLROOM



SATOO GARDEN



POOLSIDE GARDEN



### HORIZON CLUB PRIVILEGES

- Express check-in and check-out
- Horizon Club Lounge with complimentary buffet breakfast, afternoon tea, evening cocktails and canapés
- Complimentary usage of computer, wireless printer, and Internet service
- Complimentary suit-pressing upon arrival
- Complimentary selection of international newspapers and magazines
- Full concierge service
- Private meeting rooms

### BUSINESS CENTRE

The comprehensive business centre offers secretarial, translation, photocopying and courier services. Personal computers and other IT equipment are available upon request. Private meeting rooms are also accessible, complete with video and teleconference facilities (upon request).

### RECREATION FACILITIES

- Health club
- CHI, The Spa at Shangri-La
- Multi-purpose workout studio
- Sauna, steam bath, Jacuzzi and cold plunge pool
- Outdoor tennis courts
- Lagoon-shaped outdoor swimming pool
- Children's Aqua Playground

### OTHER SERVICES AND FACILITIES

- Wi-Fi enabled limousine service
- Car rental service
- Valet parking
- 24-hour clinic
- Complimentary Wi-Fi Internet connection in all restaurants, public areas, guest rooms, and meeting rooms

### RESTAURANTS AND BARS

Restaurants / Bars	Capacity	Location	Cuisine
JIA	185	Level 1	Chinese
SATOO	387	Level 1	International cuisine with 12 open kitchen stations
SATOO Garden	115	Level 1	International cuisine (for al fresco dining)
SATOO Deli Shop	30	Level 1	Pastries, cakes and coffee
Rosso	141	Level 2	Italian
Lobby Lounge	120	Level 2	Beverages and snacks
Nishimura	122	Level 1	Japanese
B.A.T.S.	260	Level 1	Western



**SHANGRI-LA**

HOTELS *and* RESORTS

Shangri-La Hotel, Jakarta

Kota BNI, JL. Jend. Sudirman Kav. 1, Jakarta 10220, Indonesia

Tel: (62 21) 2922 9999 Fax: (62 21) 2922 9900 [slj@shangri-la.com](mailto:slj@shangri-la.com) [www.shangri-la.com](http://www.shangri-la.com)