



KERRY HOTEL, HONG KONG

Kerry Hotel Hong Kong is the fourth hotel by Shangri-La Hotels and Resorts in Hong Kong. Conveniently located in the Hung Hom Bay community, Kerry Hotel reflects a 'World of Relaxed Luxury' on Hong Kong's panoramic waterfront.

Designed by André Fu, this flagship property defines a new generation of hospitality experience that is offering residents, business travellers and leisure guests unique dining concepts, intuitive services and extraordinary spaces with spectacular views.

LOCATION

Located on Kowloon's vibrant waterfront, this new five-star urban resort is at the heart of the Hung Hom Bay community, commanding magnificent views of the Victoria Harbour and the Hong Kong Island skyline. It is also seamlessly connected to the rest of Hong Kong via ferry, MTR, a bus interchange station, taxi and limousine services, and only steps away from Tsim Sha Tsui East shopping district.



Transportation Hub	Travel Time	
Hung Hom Ferry Pier	2 minutes	🚶
Whampoa MTR Station	5 minutes	🚶
Hung Hom MTR Station	5 minutes	🚗
Guangzhou-HK Train Terminus	10 minutes	🚶
Kai Tak Cruise Terminal	15 minutes	🚗
China Macau Ferry Pier	15 minutes	🚗
HK International Airport	40 minutes	🚗



ROOM EXPERIENCE

Over 60 per cent of the 546 guestrooms feature harbour views, with rooms ranging from 42 square metres for a Deluxe City View Room to 294 square metres for Kerry Hotel's stunning Presidential Suite. Benefits include complimentary mini bar upon arrival and an e-concierge service. With the unique podium design of the hotel, guests will be swept away by breathtaking views of Victoria Harbour and the Hong Kong Island skyline.

- Complimentary in-room internet and wifi access
- Complimentary minibar (excluding hard liquor and wine)
- 43" flat screen LED television
- Coffee and tea making facilities
- Dual line International Direct Dial telephone with voicemail
- Marble bathroom with rain shower
- Satellite TV channels
- Electronic safe

Room type	Number of rooms	Average Area (sqm)
Deluxe City View Room	149	42
Deluxe Sea View Room	199	42
Premier City View Room	40	52
Premier Sea View Room	57	52
Club City View Room	28	42
Club Sea View Room	31	42
Club Premier City View Room	7	52
Club Premier Sea View Room	9	58
Club Premier Sea View with Balcony	2	79
Executive Sea View Suite	21	90
Kerry Suite	1	143
Hung Hom Suite	1	143
Presidential Suite	1	294
Total	546	



INNOVATIVE DINING

Restaurants and Bars	Capacity	Location	Speciality
Lobby Lounge	109 indoor 40 outdoor	L1	Locally inspired cuisine
Big Bay Café	282 indoor 128 outdoor	L3	All day dining
Hung Tong	90 indoor	L7	Cantonese cuisine
Red Sugar	93 indoor 200 outdoor	L7	Rooftop bar
Dockyard	400 indoor 210 outdoor	L1	International dining marketplace

Lobby Lounge

Nestled within the expansive lobby, our peaceful Lobby Lounge is a sanctuary behind floor to ceiling windows, looking out to a lush garden with water features, and home to a stately bronze sculptor of the 'Tai Chi' series by the famous sculpturist, Ju Ming. Inspired by typical Hong Kong fare, the Lobby Lounge features reinterpretations of nostalgic local dishes, whilst the drinks menu offers Asian-inspired cocktails, homemade soft drinks and unique Hong Kong flavours such as Yuanyang and Silk Stocking Tea.

Big Bay Café

Our All Day Dining restaurant invites guests to embark on a journey of gastronomic moments with a matrix of pavilions where diners can sample unique and hand crafted temptations. From Steam, Grill, Chill, Fry, Stew, Dessert Lab and The Nook, each pavilion offers diners an experiment with something new and specialised from the many cuisines available. The dining venue features both indoor and outdoor seating both offering unobstructed views of the Victoria Harbour.



Hung Tong

Chef Ken Yu has transformed traditional dishes into creative signature food with passion and flair. The restaurant commands views over Victoria Harbour and Hong Kong Island, offering a contemporary Chinese menu within a setting that draws guests back to the historical heritage of Hung Hom. The history of the area is captured in the design with a contrasting modern and traditional finish of raw red bricks, vintage-inspired leather chairs and tinted glass pendants. Besides alcoves and booth seats that offer intimate spaces, Hung Tong also has two private dining rooms for special occasions, celebrations and events.



Red Sugar

Connected to Hung Tong, Red Sugar houses an impressive collection of craft brews, an extensive wine selection, oak-aged barrelled cocktails, and an innovative bar snack menu. With hints of the former Hung Hom entwined in the design and an outdoor terrace offering a 270 degree view of the Victoria Harbour, Red Sugar is a place to be seen, setting trends in the modern day Hong Kong neighbourhood.



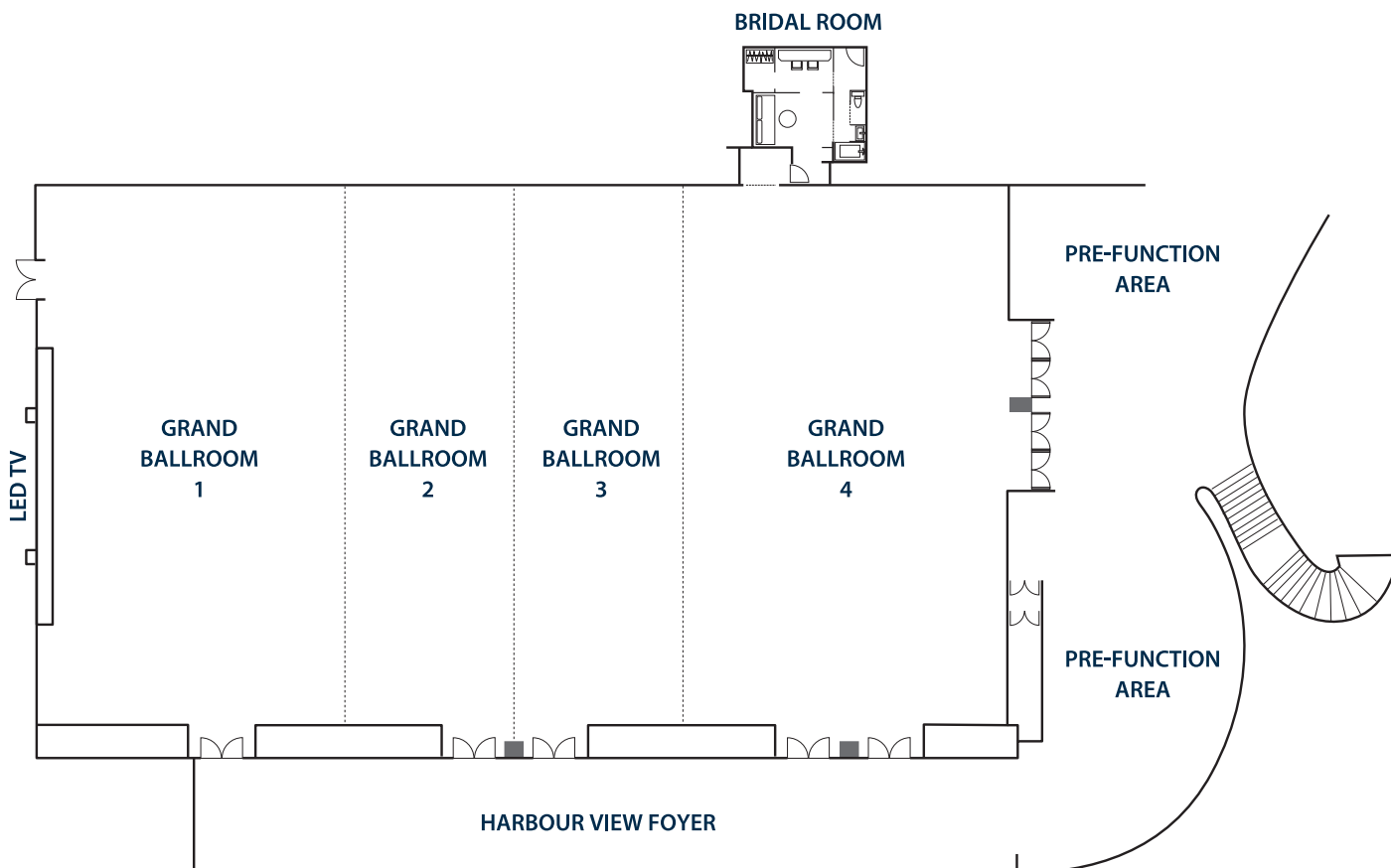
Dockyard

As a standalone restaurant, Dockyard houses 10 different local and international kitchens serving a range of cuisines such as Korean, Japanese, Vietnamese, Indian and Thai, as well as a bar with homemade craft brews and a dessert station. With both indoor and rooftop seating, guests can enjoy fresh air and live entertainment on evenings, weekends and public holidays, including live music, stand-up comedy, and quiz nights.



Venue	Capacity Banquet	Area (sqm)
Level 2		
Grand Ballroom	1,248	1,756
Grand Ballroom 1	312	555
Grand Ballroom 2	144	288
Grand Ballroom 3	144	288
Grand Ballroom 4	360	625

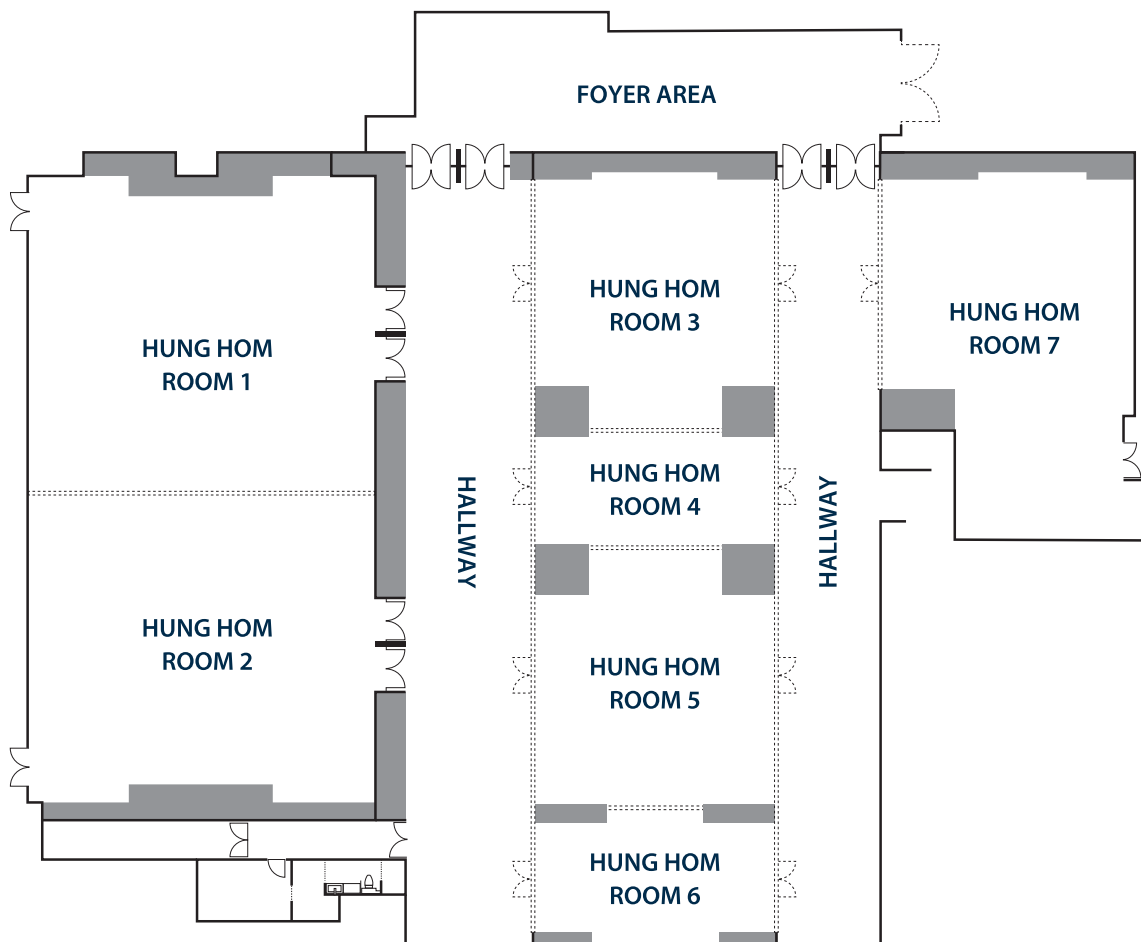
GRAND BALLROOM





Venue	Capacity Banquet	Area (sqm)
Level 1		
Hung Hom Ballroom	672	1,125
Hung Hom Room 1	120	266
Hung Hom Room 2	120	266
Hung Hom Room 3	60	135
Hung Hom Room 4	24	60
Hung Hom Room 5	60	127
Hung Hom Room 6	24	77
Hung Hom Room 7	96	191

HUNG HOM BALLROOM





Venue	Capacity Banquet	Area (sqm)
Level 4		
Harbour Room with Terrace	200	233
Harbour Room	80	158
Harbour Terrace	80	75
Outdoor Deck	200	286

HARBOUR ROOM WITH TERRACE

