



FACTS AND INFORMATION

SHANGRI-LA SHOUGANG PARK, BEIJING

LOCATION

Embracing the panoramic views of Shijingshan and Qunming Lake, Shangri-La Shougang Park, Beijing is ideally located in the heart of the New Shougang High-end Industry Comprehensive Service Area (often referred to as the Shougang Park), a renowned new landmark of capital city revitalisation. The hotel sits adjacent to the snowboard Big Air Venue for the Beijing 2022 Winter Olympic and four stadiums of the National Winter Sports Training Centre. As a fusion of industrial heritage and Asian hospitality, the community hotel boasts unique dining concepts, comfortable stay experience, diverse family facilities and extraordinary meeting spaces.

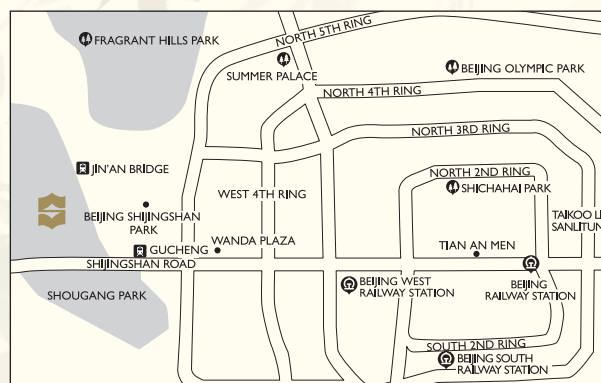
Shangri-La Shougang Park, Beijing, is excellently situated where guests can easily find their way to commercial centres, tourist attractions and city landmarks. It is about 18 km from Beijing West Railway Station, 27 km from Beijing Station, 54 km from Beijing Capital International Airport and 62 km from Beijing Daxing International Airport. The hotel is an ideal destination for both leisure and business travelers.

ACCOMMODATION

The first phase of the hotel boasts 283 well-appointed modern yet stylish rooms and suites, with floor-to-ceiling windows to bring natural light, and the tranquil setting of the Yongding River and Shijingshan, into the room. Ranging from 42 to 84 square metres, every guest room is equipped with high-speed internet, 5G coverage and air and water filtration systems. In addition, the hotel has 7 family suites designed with innovative concepts around the themes of treetop, ski, and space. Whimsical and fantasy-styled children's beds, an immersive play area and overwhelming family facilities are created to provide our family guests with an even more convenient and pleasant stay.

RECREATION FACILITIES

- Fully equipped wellness club
- Indoor heated swimming pool and wading pool
- Children' zone and immersive play area
- Sauna and steam rooms



GUESTROOMS

Categories	Rooms	Area (m ²)
Deluxe Room (King)	190	42
Deluxe Room (Twin)	76	42
Family Suite	7	84
Executive Suite	10	84

GUESTROOM FEATURES

- 24-hour room service
- Coffee and tea making facilities and mini bar
- Satellite / cable TV and movie channels
- IDD telephones with data port and voice mail
- Electronic safe
- Pillow menu
- Separate toilet, shower, and bathtub
- Electric-drive curtain
- Capsule coffee maker
- Hair dryer
- Electronic weight scale
- Walk-in closet
- Air and water filtering systems
- Wi-fi access and 5G coverage

OTHER SERVICES AND FACILITIES

- 24-hour in-room dining
- Courier, parcel, and postal services
- Foreign exchange counter
- Baby-sitting service
- Florist
- Limousine and car rental services
- Safe deposit boxes
- Same-day laundry and valet services
- Wi-fi access and 5G coverage throughout the hotel
- Accessible rooms
- Underground car park
- Outside catering and banquet services

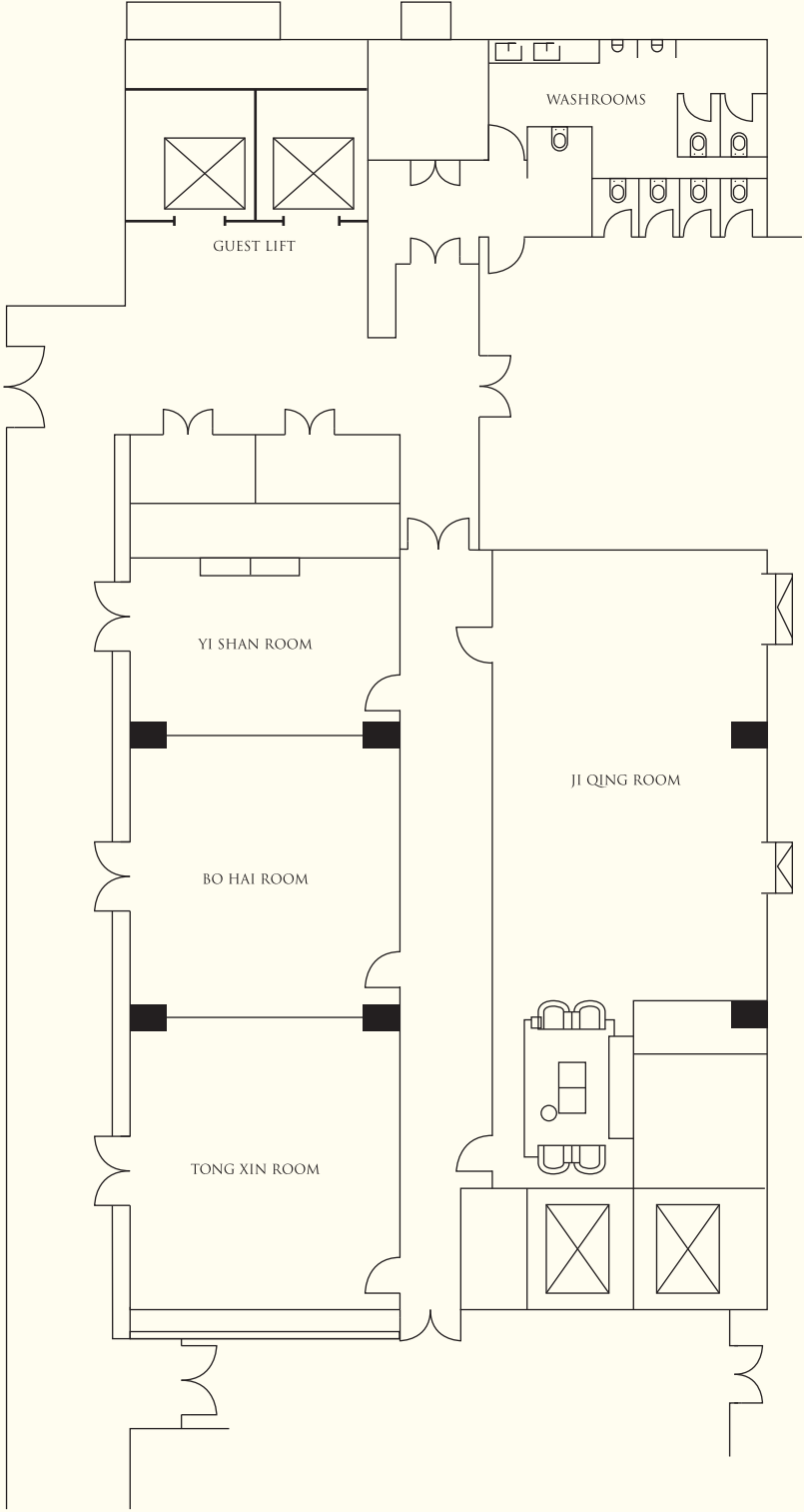
RESTAURANTS AND BARS

Restaurants / Bars	Capacity	Location	Cuisine
Shang Market	210	Level 1	International
Power Station	86	Level 1	Beverages and Snacks
Shang Brew	230	Standalone (Xiu Chi Aside)	Craft Beer and Western

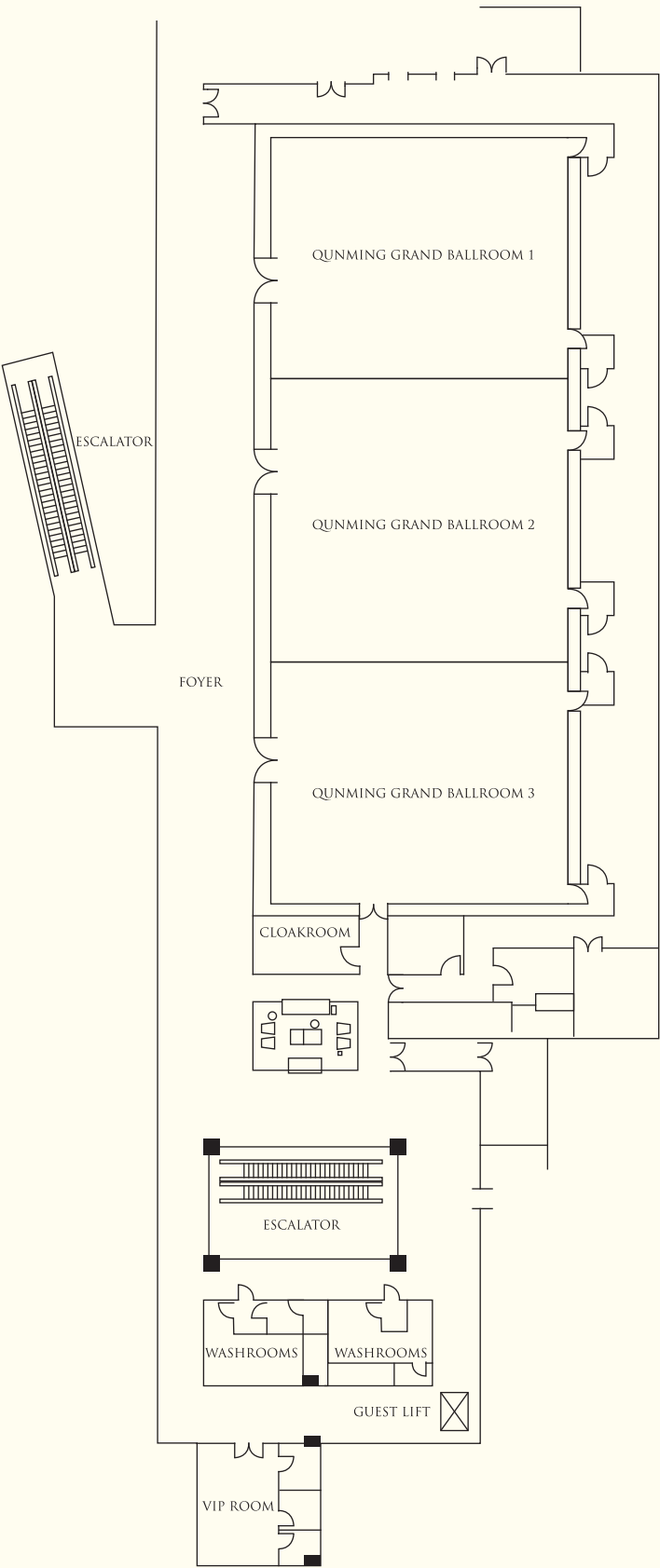
BANQUET AND CONFERENCE ROOMS

Venue	Capacity				Dimension (m²)	Area (m²)	Ceiling Height (m)
	Reception	Theatre	Banquet	Classroom			
Level 3							
Shan Hai Tong Qing	100	150	90	90	-	238	3.3
Yi Shan Room	15	20	10	10	4.4*6.5	29	3.3
Bo Hai Room	20	30	20	20	7*6.5	46	3.3
Tong Xin Room	20	30	20	20	7*6.5	46	3.3
Ji Qing Room	40	70	40	40	10.7*6.4	68	3.3
Level 5							
Qunming Grand Ballroom	700	600	450	520	45*17	765	6.5
Qunming Grand Ballroom 1	200	180	140	140	14*17	238	6.5
Qunming Grand Ballroom 2	300	240	170	170	17*17	289	6.5
Qunming Grand Ballroom 1+2	500	420	300	310	31*17	527	6.5
Qunming Grand Ballroom 3	200	180	140	140	14*17	238	6.5
Qunming Grand Ballroom 2+3	500	420	300	310	31*17	527	6.5
Foyer	-	-	-	-	50*5.5	275	3
VIP Room	-	-	-	-	-	27	3.3

LEVEL 3



LEVEL 5





SHANGRI-LA
SHOUGANG PARK
BEIJING

Shangri-La Shougang Park, Beijing
Qunming Lake West Street, No. 68 Shijingshan Road, Beijing, China
Tel: (86 10) 8829 8888 shougang@shangri-la.com www.shangri-la.com